

Teacher's Sheet:

Instructions: Read the words to your students horizontally (left to right, top to bottom) emphasizing the targeted sound and ask them to color the box where they hear the sound of letter. Ask them: Is it at the beginning, in the middle, or at the end?

It's important to make sure that the students understand the terms "beginning", "middle", and "end". It might be helpful to draw 3 big squares on a big, laminated chart paper, lay it on the ground, and play a game where students need to follow instructions to stand on the BEGINNING, MIDDLE, and END squares.

This will also help students make connections to the placement of the letter sound.

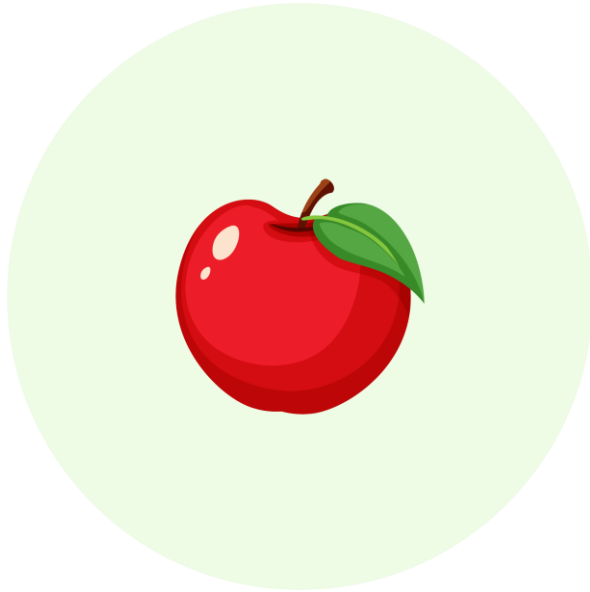
Beginning	Middle	End



Apple	Ax	Apple	Hat	Cat
Camera	Bird	Book	Book	Tub
Robot	Carla	Cat	Music	Picture
Cup	Magic	Elsa	End	Bed
Red	Seven	Frog	Fish	Feet
Roof	Raft	Grace	Goat	Gate
Dog	Hadi	Hand	Hat	Head
Ilham	Insect	Fig	Six	Julia
Jump	Juice	Jug	Karim	Kit
King	Kitchen	Kid	Lebanon	Leaf
Pool	Sleep	Lentil	Mop	Mess
Mug	Family	Mom	Nose	Nap
Fan	Hand	Sunny	Noon	On
Olive	Dog	Hot	Pen	Sleep
Paper	Quilt	Quiz	Question	Quiet
Rabbit	Car	Garden	Sam	Sara
Star	Insect	bus	Ten	Cat
Guitar	Tent	Umbrella	Up	Jump
Uncle	Vanessa	Van	Travel	Volleyball
Visit	Wolf	Wand	Window	Wings
x-ray	Taxi	Box	x-ray	Ox
Yara	Yellow	Yoyo	Yogurt	Boy
Zeina	Ziad	Zoom	Zigzag	Zebra
Zoo				



Read the word. Then, color the box where you hear the sound of letter Aa. Is it at the beginning, in the middle, or at the end?



--	--	--



--	--	--



Read the word. Then, color the box where you hear the sound of letter Aa. Is it at the beginning, in the middle, or at the end?



--	--	--



--	--	--



Read the word. Then, color the box where you hear the sound of letter Aa. Is it at the beginning, in the middle, or at the end?



--	--	--



Read the word. Then, color the box where you hear the sound of letter Bb. Is it at the beginning, in the middle, or at the end?



--	--	--



--	--	--



Read the word. Then, color the box where you hear the sound of letter Bb. Is it at the beginning, in the middle, or at the end?



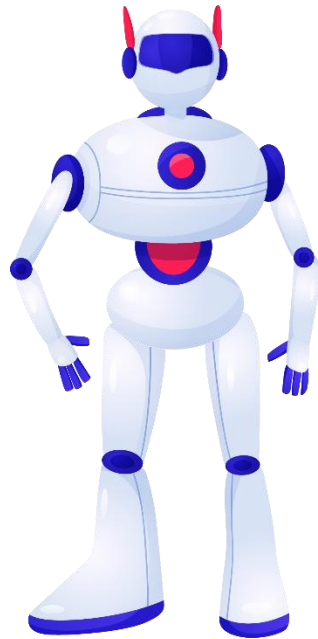
--	--	--



--	--	--



Read the word. Then, color the box where you hear the sound of letter Bb. Is it at the beginning, in the middle, or at the end?



--	--	--



Read the word. Then, color the box where you hear the sound of letter Cc. Is it at the beginning, in the middle, or at the end?



--	--	--



--	--	--



Read the word. Then, color the box where you hear the sound of letter Cc. Is it at the beginning, in the middle, or at the end?



--	--	--



--	--	--



Read the word. Then, color the box where you hear the sound of letter Cc. Is it at the beginning, in the middle, or at the end?



--	--	--



--	--	--



Read the word. Then, color the box where you hear the sound of letter Ee. Is it at the beginning, in the middle, or at the end?



--	--	--



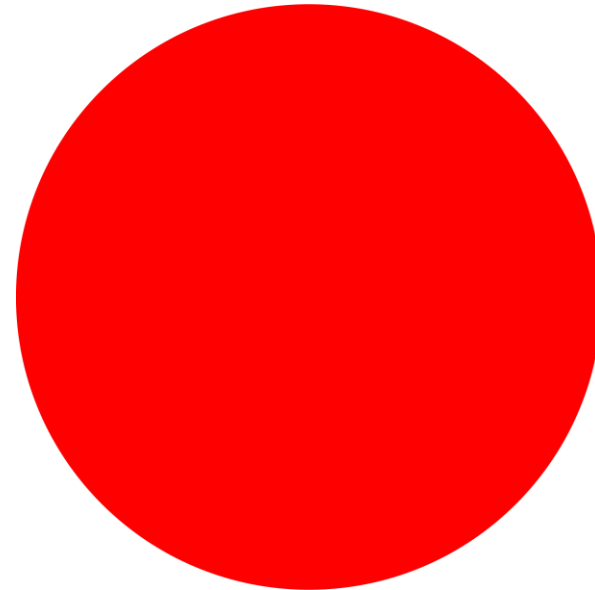
--	--	--



Read the word. Then, color the box where you hear the sound of letter Ee. Is it at the beginning, in the middle, or at the end?



--	--	--



--	--	--



Read the word. Then, color the box where you hear the sound of letter Ee. Is it at the beginning, in the middle, or at the end?



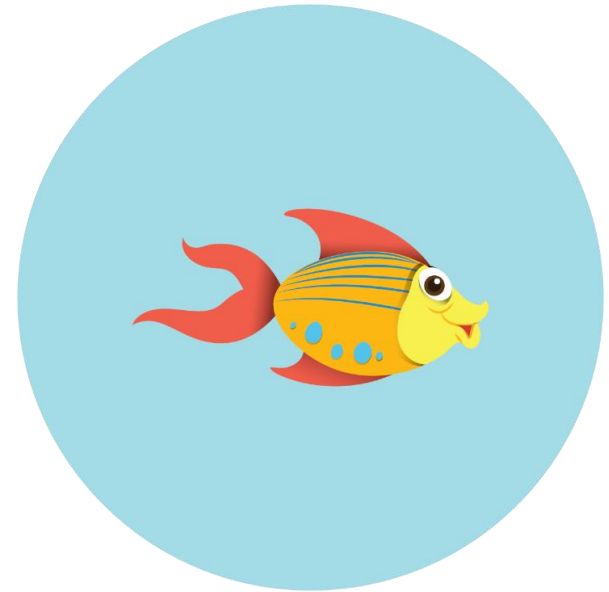
--	--	--



Read the word. Then, color the box where you hear the sound of letter Ff. Is it at the beginning, in the middle, or at the end?



--	--	--



--	--	--



Read the word. Then, color the box where you hear the sound of letter Ff. Is it at the beginning, in the middle, or at the end?



--	--	--



--	--	--



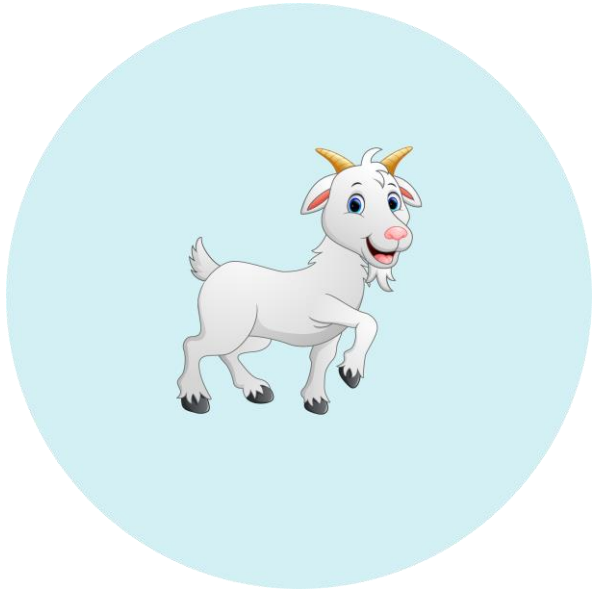
Read the word. Then, color the box where you hear the sound of letter Ff. Is it at the beginning, in the middle, or at the end?



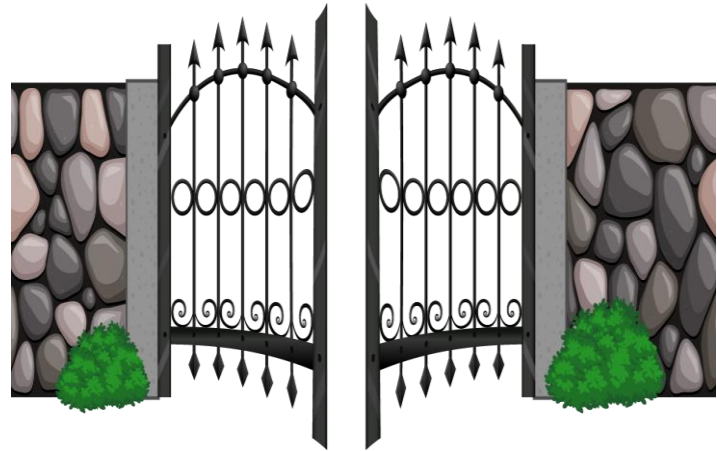
--	--	--



Read the word. Then, color the box where you hear the sound of letter Gg. Is it at the beginning, in the middle, or at the end?



--	--	--



--	--	--



Read the word. Then, color the box where you hear the sound of letter Gg. Is it at the beginning, in the middle, or at the end?



--	--	--



--	--	--



Read the word. Then, color the box where you hear the sound of letter Hh. Is it at the beginning, in the middle, or at the end?



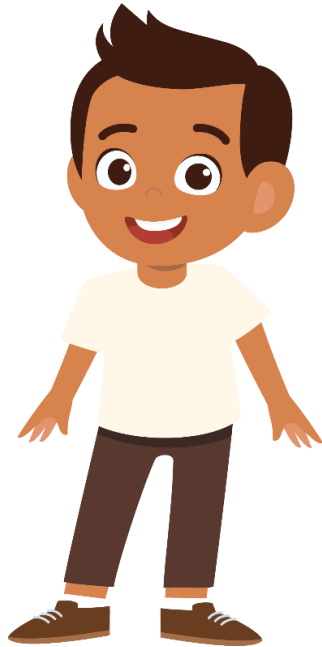
--	--	--



--	--	--



Read the word. Then, color the box where you hear the sound of letter Hh. Is it at the beginning, in the middle, or at the end?



--	--	--



--	--	--



Read the word. Then, color the box where you hear the sound of letter Ii. Is it at the beginning, in the middle, or at the end?



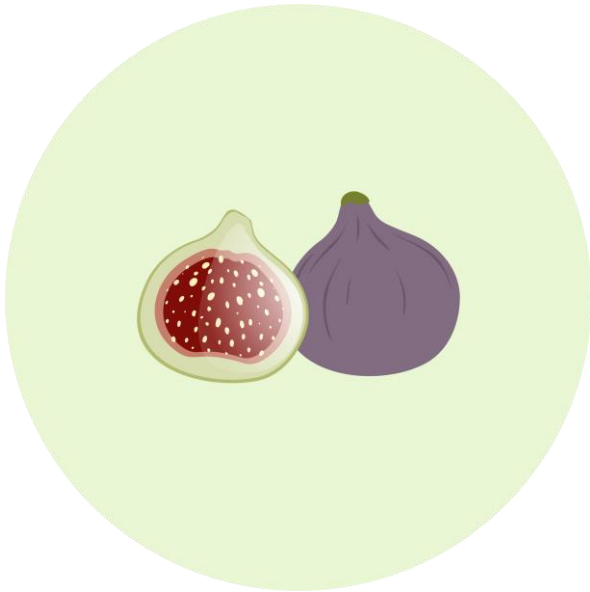
--	--	--



--	--	--



Read the word. Then, color the box where you hear the sound of letter Ii. Is it at the beginning, in the middle, or at the end?



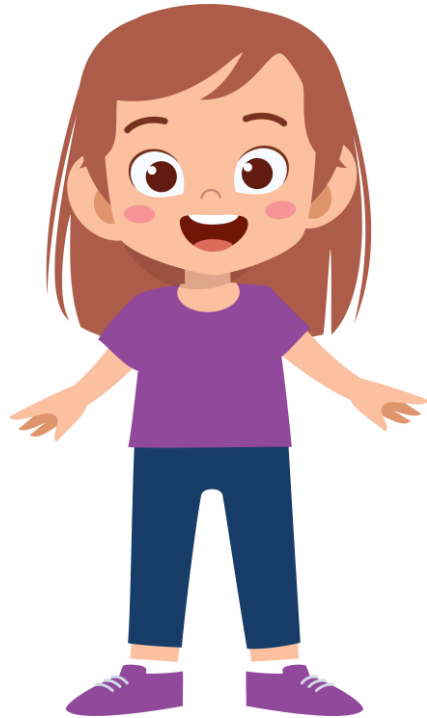
--	--	--



--	--	--



Read the word. Then, color the box where you hear the sound of letter Jj. Is it at the beginning, in the middle, or at the end?



--	--	--



Read the word. Then, color the box where you hear the sound of letter Jj. Is it at the beginning, in the middle, or at the end?



--	--	--



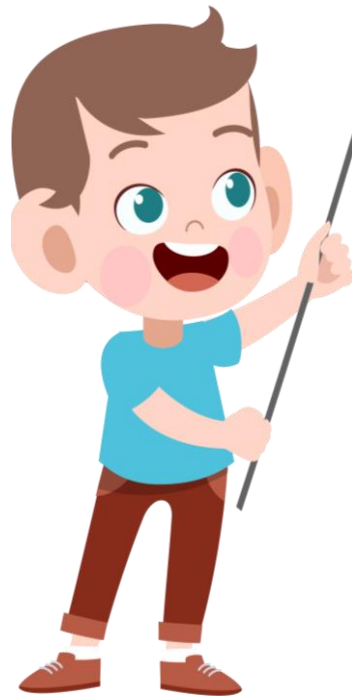
--	--	--



--	--	--



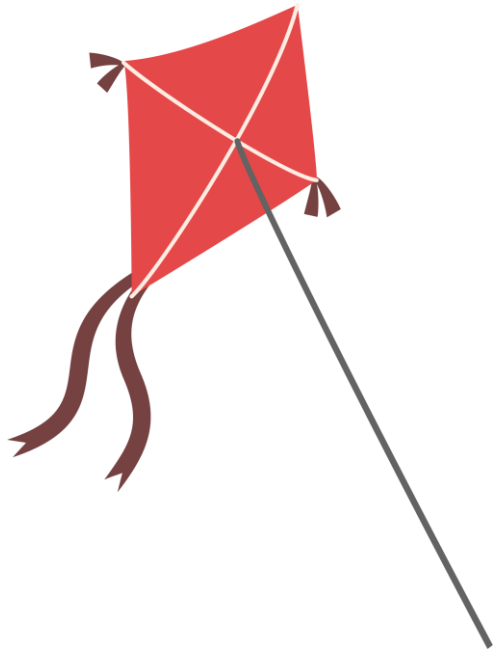
Read the word. Then, color the box where you hear the sound of letter Kk. Is it at the beginning, in the middle, or at the end?



--	--	--



Read the word. Then, color the box where you hear the sound of letter Kk. Is it at the beginning, in the middle, or at the end?



--	--	--



--	--	--



Read the word. Then, color the box where you hear the sound of letter Kk. Is it at the beginning, in the middle, or at the end?



--	--	--



--	--	--



Read the word. Then, color the box where you hear the sound of letter L. Is it at the beginning, in the middle, or at the end?



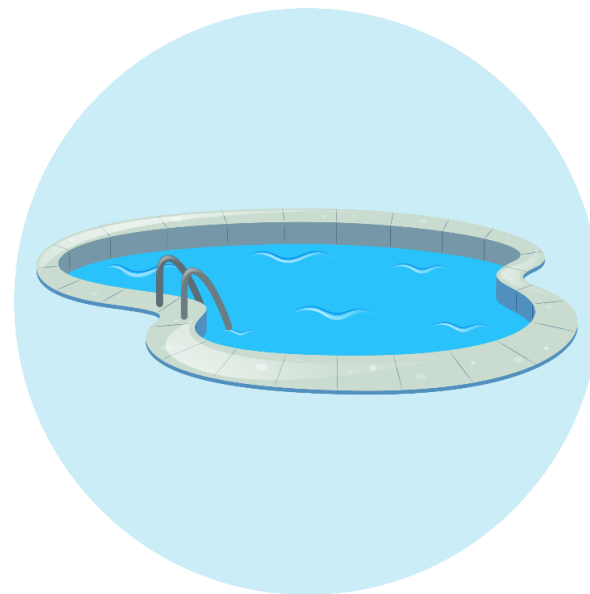
--	--	--



Read the word. Then, color the box where you hear the sound of letter L. Is it at the beginning, in the middle, or at the end?



--	--	--



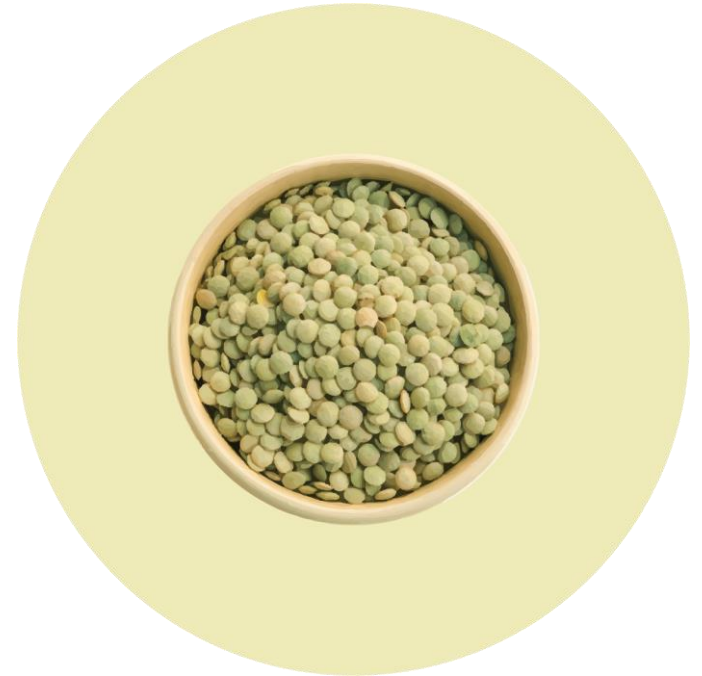
--	--	--



Read the word. Then, color the box where you hear the sound of letter L. Is it at the beginning, in the middle, or at the end?



--	--	--



--	--	--



Read the word. Then, color the box where you hear the sound of letter Mm. Is it at the beginning, in the middle, or at the end?



--	--	--



--	--	--



Read the word. Then, color the box where you hear the sound of letter Mm. Is it at the beginning, in the middle, or at the end?



--	--	--



--	--	--



Read the word. Then, color the box where you hear the sound of letter Mm. Is it at the beginning, in the middle, or at the end?



--	--	--



Read the word. Then, color the box where you hear the sound of letter Nn. Is it at the beginning, in the middle, or at the end?



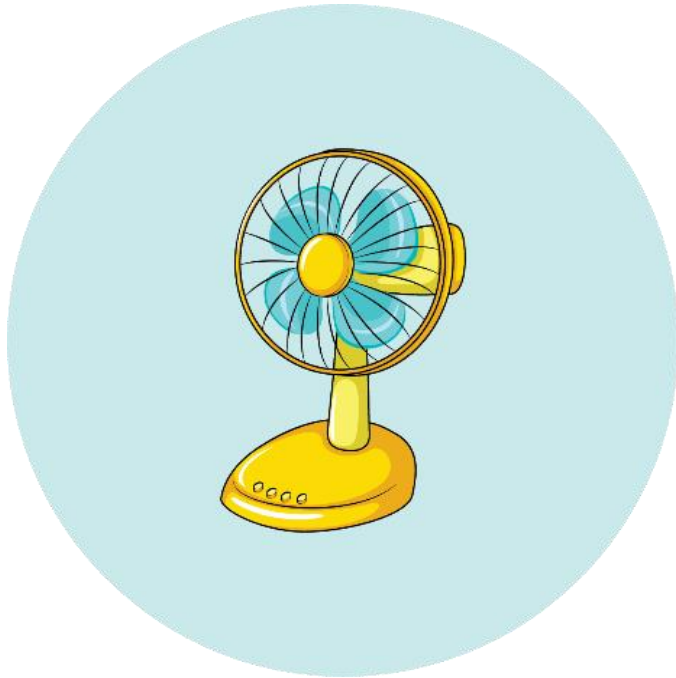
--	--	--



--	--	--



Read the word. Then, color the box where you hear the sound of letter Nn. Is it at the beginning, in the middle, or at the end?



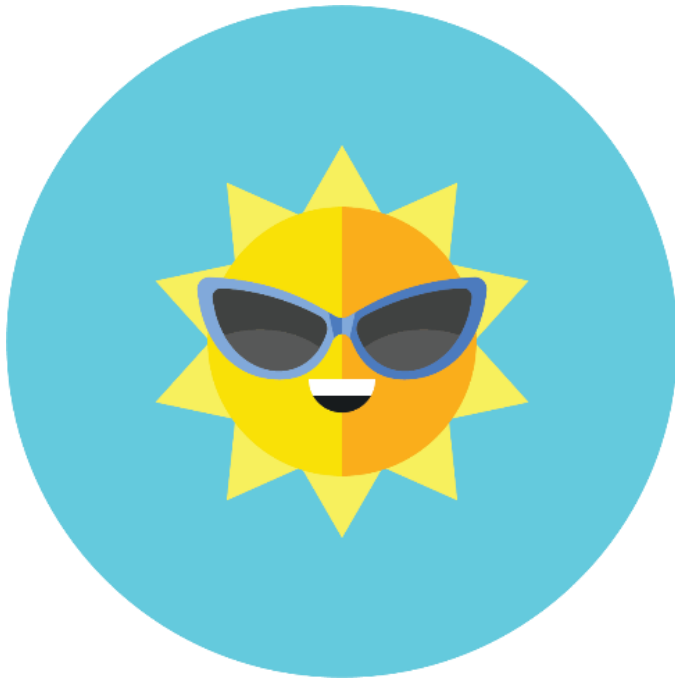
--	--	--



--	--	--



Read the word. Then, color the box where you hear the sound of letter Nn. Is it at the beginning, in the middle, or at the end?



--	--	--



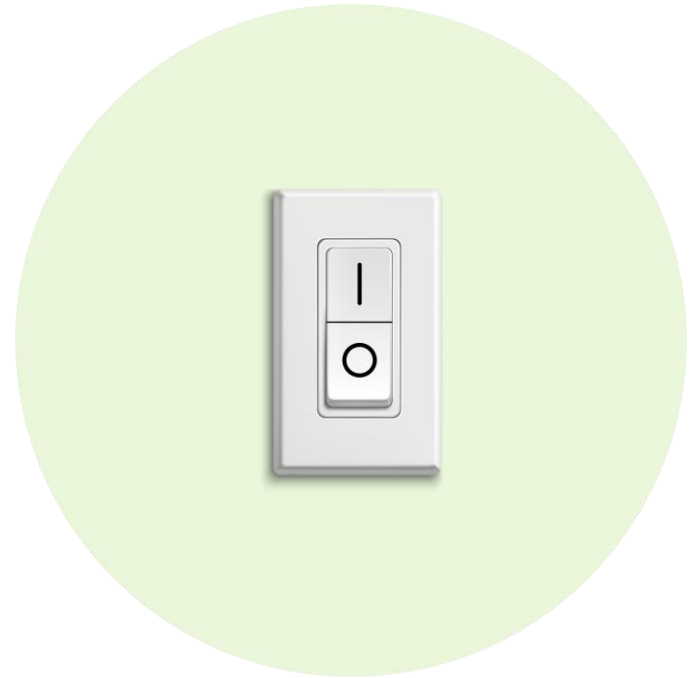
--	--	--



Read the word. Then, color the box where you hear the sound of letter Oo. Is it at the beginning, in the middle, or at the end?



--	--	--



--	--



Read the word. Then, color the box where you hear the sound of letter Oo. Is it at the beginning, in the middle, or at the end?



--	--	--



--	--	--



Read the word. Then, color the box where you hear the sound of letter Pp. Is it at the beginning, in the middle, or at the end?



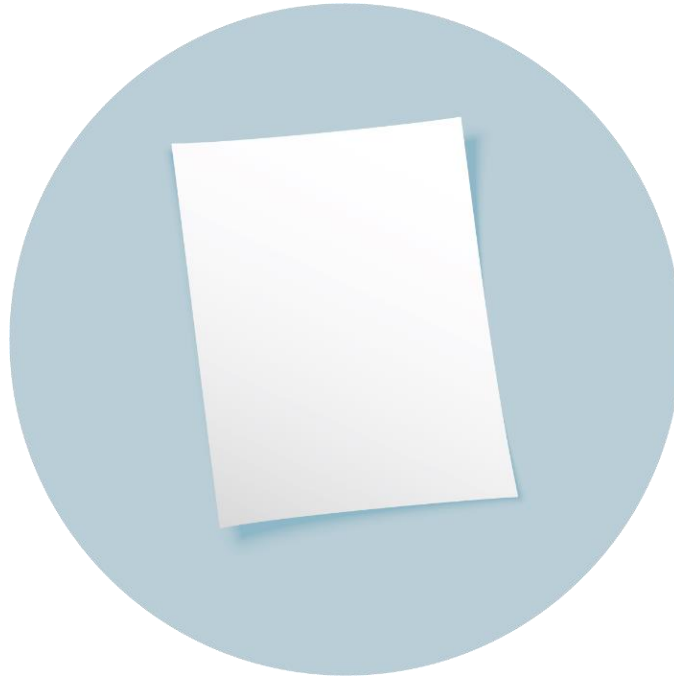
--	--	--



--	--	--



Read the word. Then, color the box where you hear the sound of letter Pp. Is it at the beginning, in the middle, or at the end?



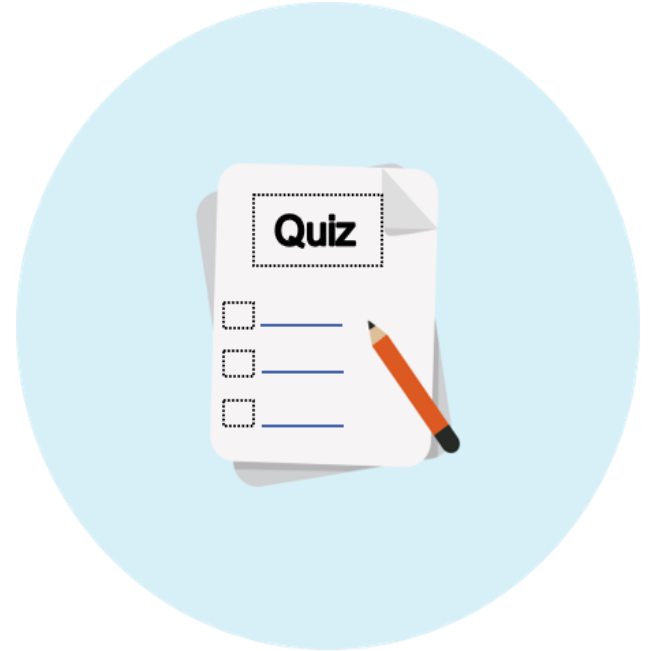
--	--	--



Read the word. Then, color the box where you hear the sound of letter Qq. Is it at the beginning, in the middle, or at the end?



--	--	--



--	--	--



Read the word. Then, color the box where you hear the sound of letter Qq. Is it at the beginning, in the middle, or at the end?



--	--	--



--	--	--



Read the word. Then, color the box where you hear the sound of letter Rr. Is it at the beginning, in the middle, or at the end?



--	--	--



--	--	--



Read the word. Then, color the box where you hear the sound of letter Rr. Is it at the beginning, in the middle, or at the end?



--	--	--



Read the word. Then, color the box where you hear the sound of letter Ss. Is it at the beginning, in the middle, or at the end?



--	--	--



--	--	--



Read the word. Then, color the box where you hear the sound of letter Ss. Is it at the beginning, in the middle, or at the end?



--	--	--



--	--	--



Read the word. Then, color the box where you hear the sound of letter Ss. Is it at the beginning, in the middle, or at the end?



--	--	--



Read the word. Then, color the box where you hear the sound of letter Tt. Is it at the beginning, in the middle, or at the end?

10

--	--	--



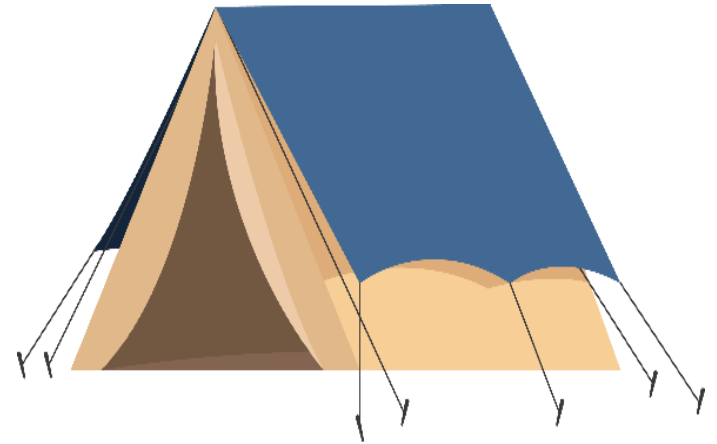
--	--	--



Read the word. Then, color the box where you hear the sound of letter Tt. Is it at the beginning, in the middle, or at the end?



--	--	--



--	--	--



Read the word. Then, color the box where you hear the sound of letter Uu. Is it at the beginning, in the middle, or at the end?



--	--	--



--	--	--



Read the word. Then, color the box where you hear the sound of letter Uu. Is it at the beginning, in the middle, or at the end?



--	--	--



--	--	--



Read the word. Then, color the box where you hear the sound of letter Vv. Is it at the beginning, in the middle, or at the end?



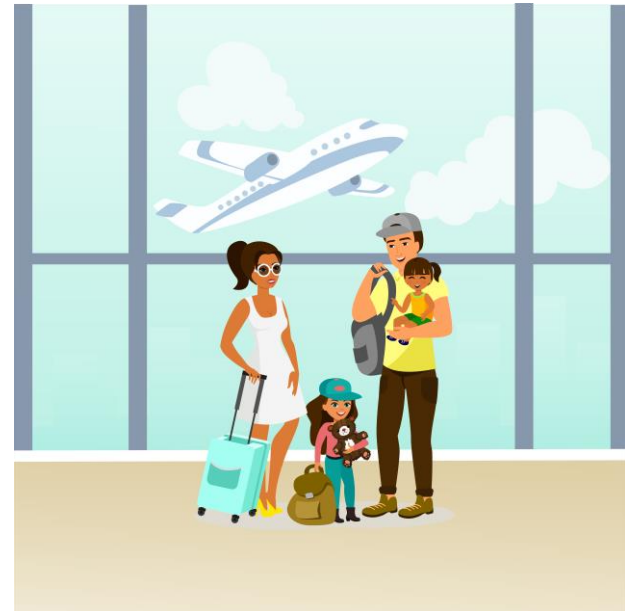
--	--	--



Read the word. Then, color the box where you hear the sound of letter Vv. Is it at the beginning, in the middle, or at the end?



--	--	--



--	--	--



Read the word. Then, color the box where you hear the sound of letter Vv. Is it at the beginning, in the middle, or at the end?



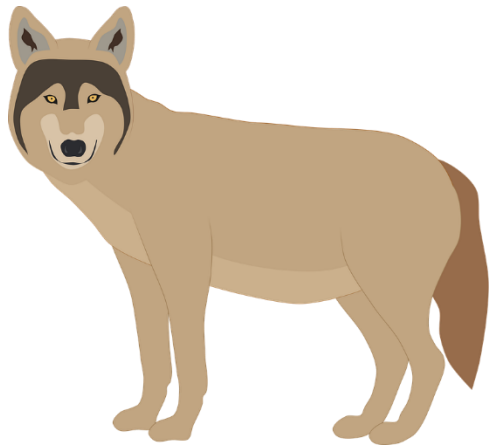
--	--	--



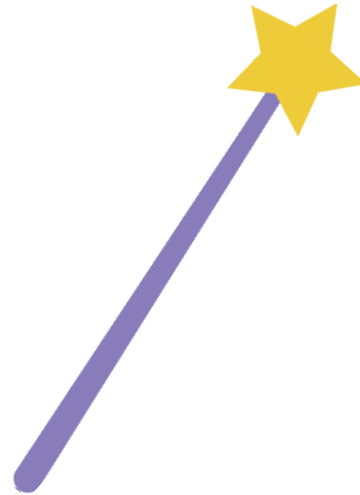
--	--	--



Read the word. Then, color the box where you hear the sound of letter Ww. Is it at the beginning, in the middle, or at the end?



--	--	--



--	--	--



Read the word. Then, color the box where you hear the sound of letter Ww. Is it at the beginning, in the middle, or at the end?



--	--	--



--	--	--



Read the word. Then, color the box where you hear the sound of letter Xx. Is it at the beginning, in the middle, or at the end?



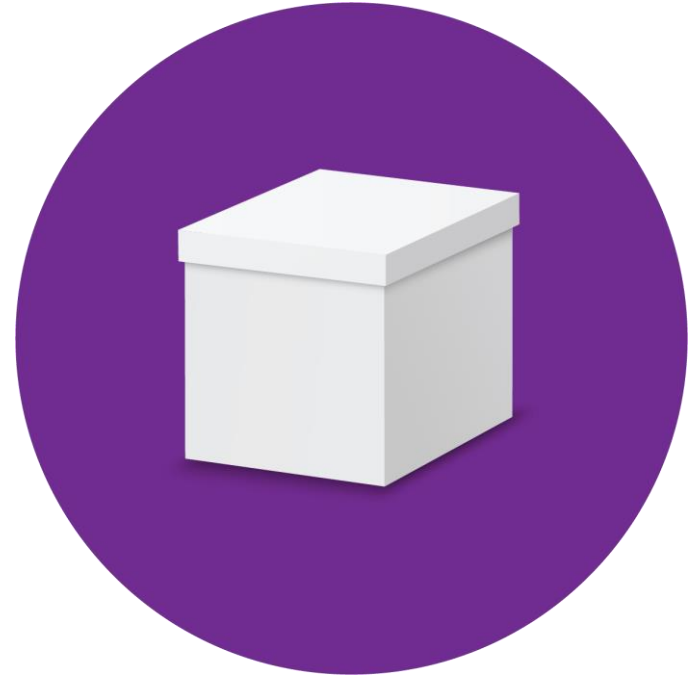
--	--	--



Read the word. Then, color the box where you hear the sound of letter Xx. Is it at the beginning, in the middle, or at the end?



--	--	--



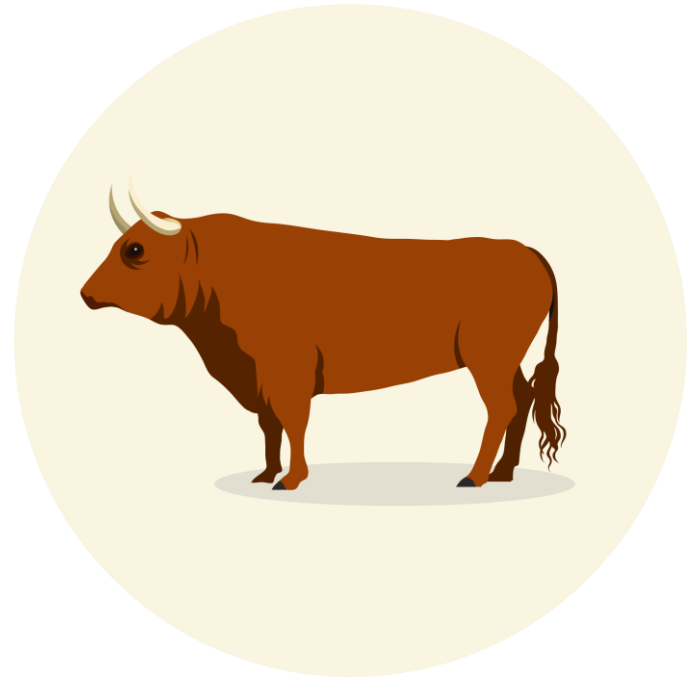
--	--	--



Read the word. Then, color the box where you hear the sound of letter Xx. Is it at the beginning, in the middle, or at the end?



--	--	--



--	--	--



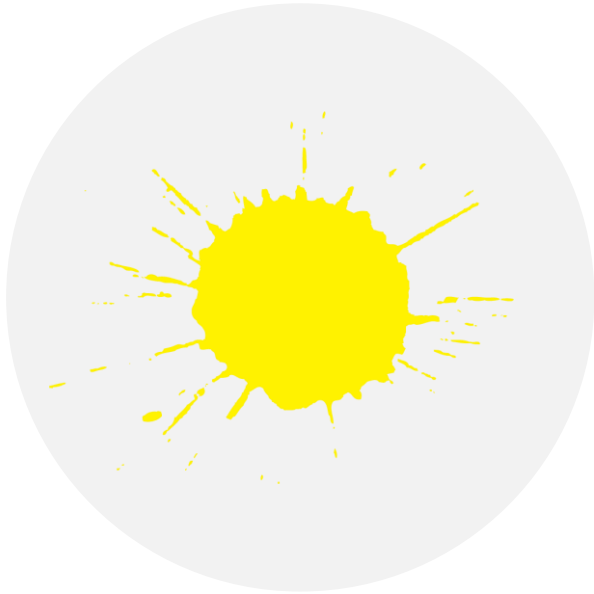
Read the word. Then, color the box where you hear the sound of letter Yy. Is it at the beginning, in the middle, or at the end?



--	--	--



Read the word. Then, color the box where you hear the sound of letter Yy. Is it at the beginning, in the middle, or at the end?



--	--	--



--	--	--





--	--	--



--	--	--



Read the word. Then, color the box where you hear the sound of letter Zz. Is it at the beginning, in the middle, or at the end?



--	--	--



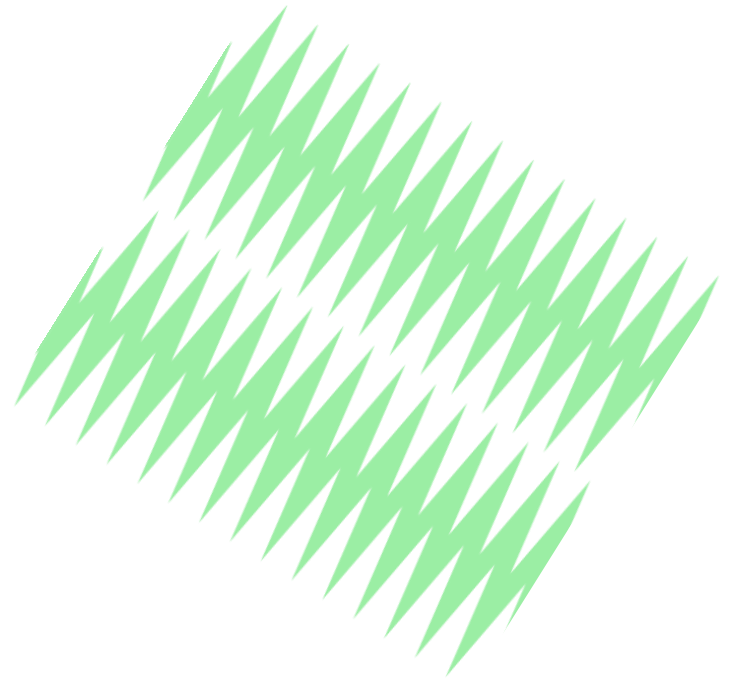
--	--	--



Read the word. Then, color the box where you hear the sound of letter Zz. Is it at the beginning, in the middle, or at the end?



--	--	--



--	--	--



Read the word. Then, color the box where you hear the sound of letter Zz. Is it at the beginning, in the middle, or at the end?



--	--	--



--	--	--

